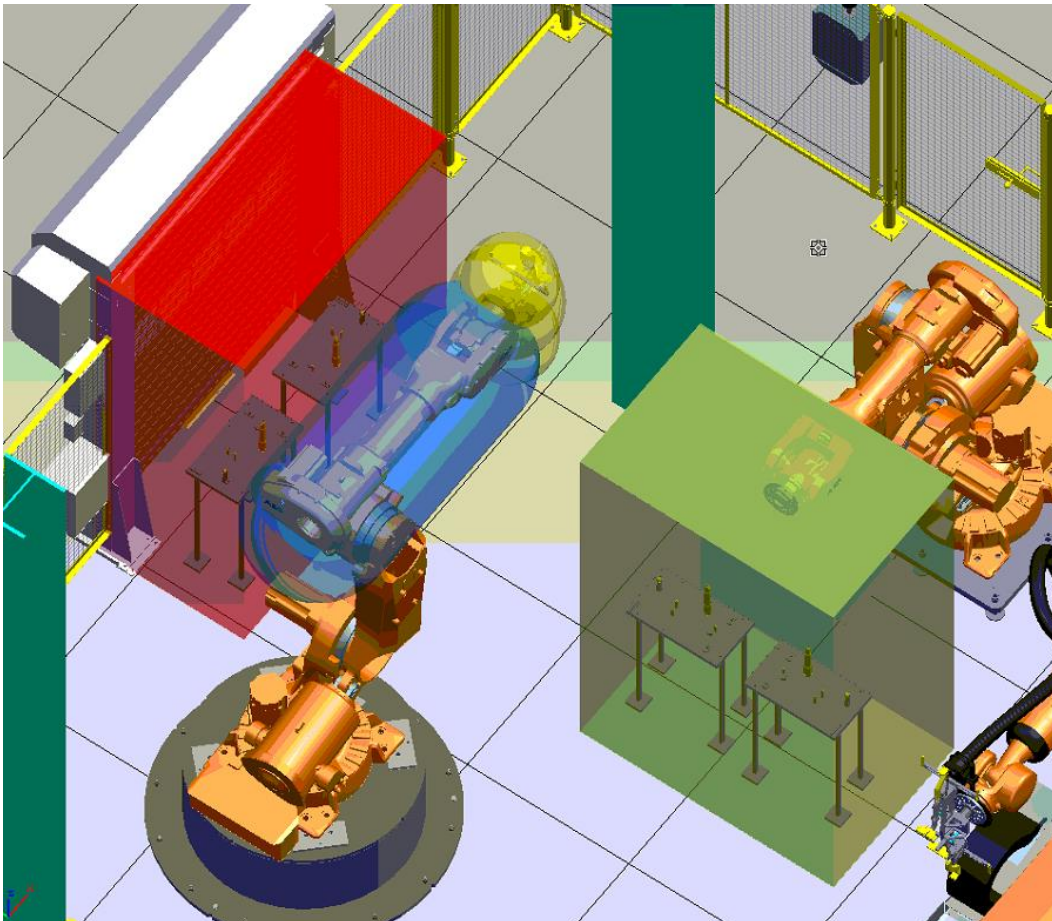


DefineSafeRobot

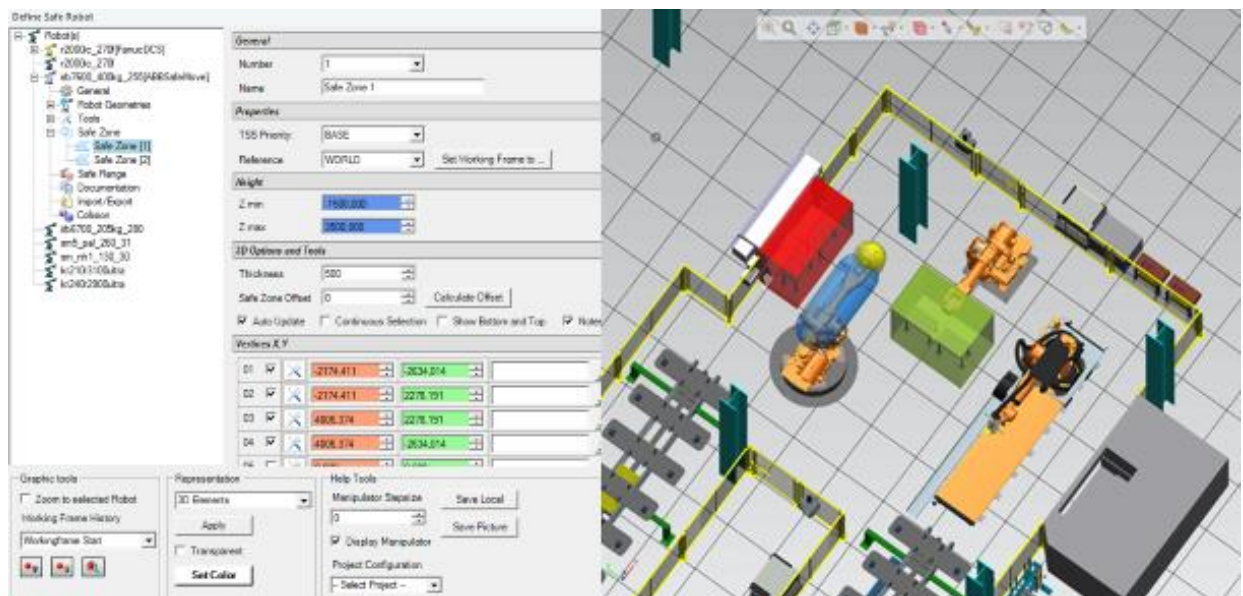


Summary

To enable you to define a safe robot according to the specifications of your customer, we have developed DefineSafeRobot. Regardless of whether you are carrying out projects for the automotive industry, your own machining centers, or small robotic cells. With DefineSafeRobot all relevant safety parameters for industrial robots in different industries can be defined.

An essential component of our product, which integrates seamlessly in all Tecnomatix robotics products, is its easy handling, which enables fast and precise work. All common robot safety features, such as safety zones, safety areas, tool envelopes, speed checks as well as position checks can be created. Nevertheless, the user does not suffer from the abundance of possible functions, since the software interface is very clearly designed and mimics the manufacturers' user interfaces as close as possible.

Our product provides intelligent support for the user. For example by preventing unauthorized safety definitions of a working area for robots. This contributes significantly to the functional safety of a robot cell.





Features

- visual representation of the parameters defined in the user interface
- automatic creation of a documentation including screenshots
- collision check of the defined tool envelopes against safety fences
- revision history with parallel visualization of different conditions
- an exact positioning function enables compliance to prescribed distances according to safety or automotive standards

Import/export for the following products or manufacturers

- ABB SafeMove SafeMovePro
- Fanuc Dual Check Safety Funktion
- Kuka Safe Operation
- Comau Robo Safe
- Yaskawa Safety

Requirements

- Process Simulate
- Process Simulate VC Lite
- Process Designer
- RobotExpert